

# STOUT LAB RESEARCH COGNITIVE MEASURES IN HUNTINGTON'S DISEASE (HD)



We are interested in understanding which cognitive skills are impactful and meaningful for the daily lives of people with HD and their loved ones. Further, we want to investigate whether current measures of cognition capture these skills to better understand how change on measures of cognition translate to changes in everyday life.

## WHAT IS INVOLVED?

You may be invited to participate in:

- A 20 minute phone screening interview.
- A 2-3 hour face-to-face cognitive assessment and interview at Monash University. You will be asked questions about your experience with cognitive symptoms and with testing.

## WHO CAN PARTICIPATE?

- Women and men aged between 18+ years.
- Fluent in English.
- People with HD and their loved ones.

## DO I NEED TO HAVE HD TO PARTICIPATE?

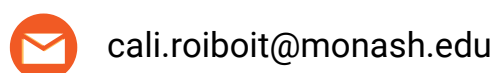
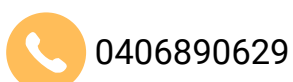
We are currently recruiting people with HD AND people who do not have HD but have a loved one who does.

**PARTICIPANT  
REIMBURSEMENT -  
UP TO \$40 GIFT  
VOUCHER**



▲  
SCAN ME

**CONTACT CALI ROIBOIT FOR MORE INFO**



This study has been approved by the Monash University Human Research Ethics Committee (Project ID: 36930)